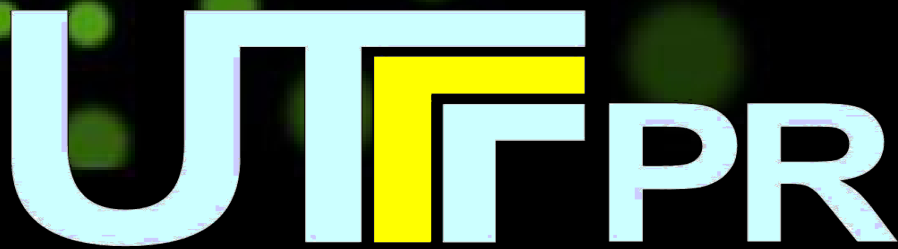


Inteligência Artificial com Software Livre

Prof. M.Sc. Wellton Costa



wcoliveira@utfpr.edu.br



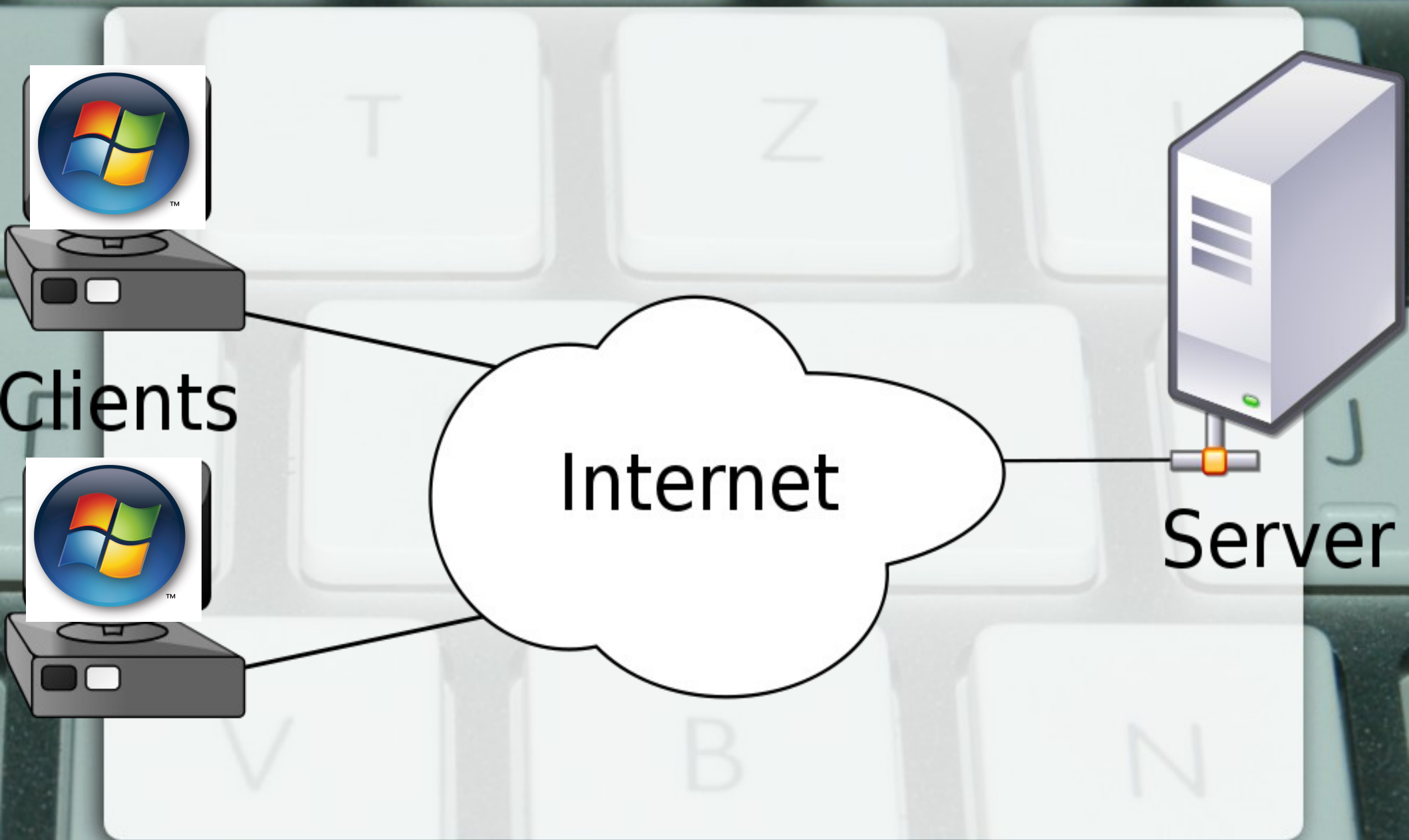
Clients

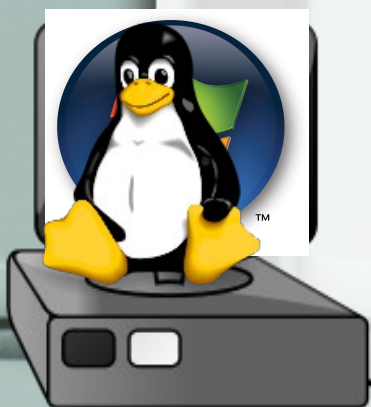


Internet

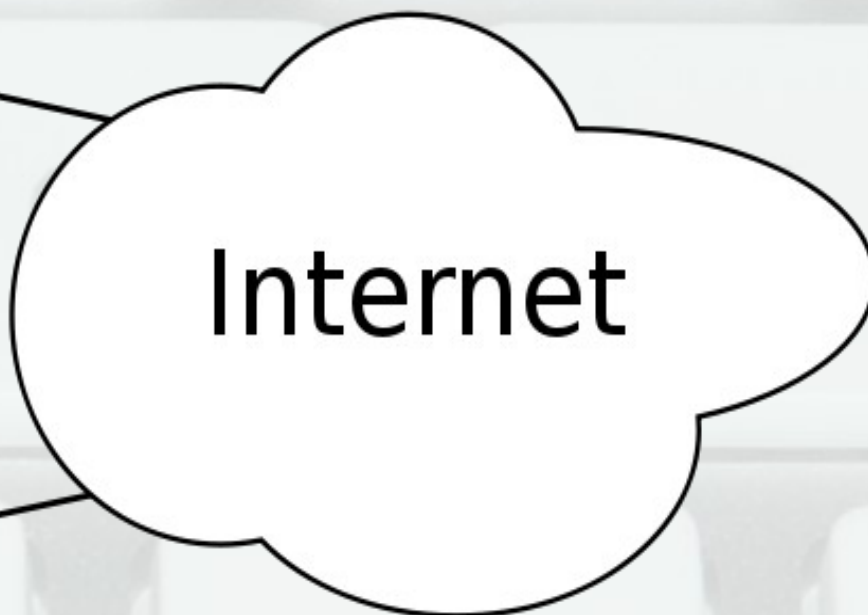


Server

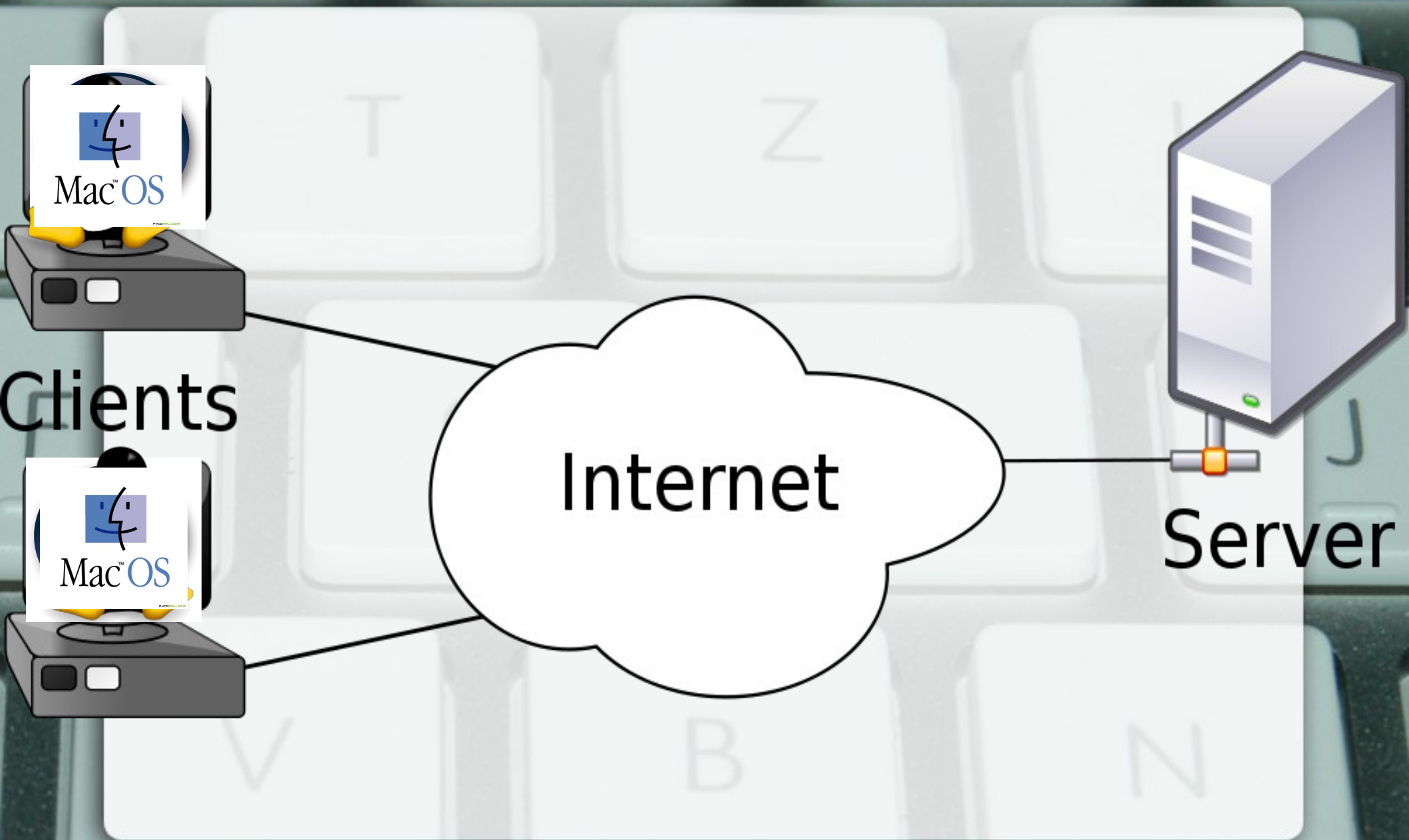




Clients

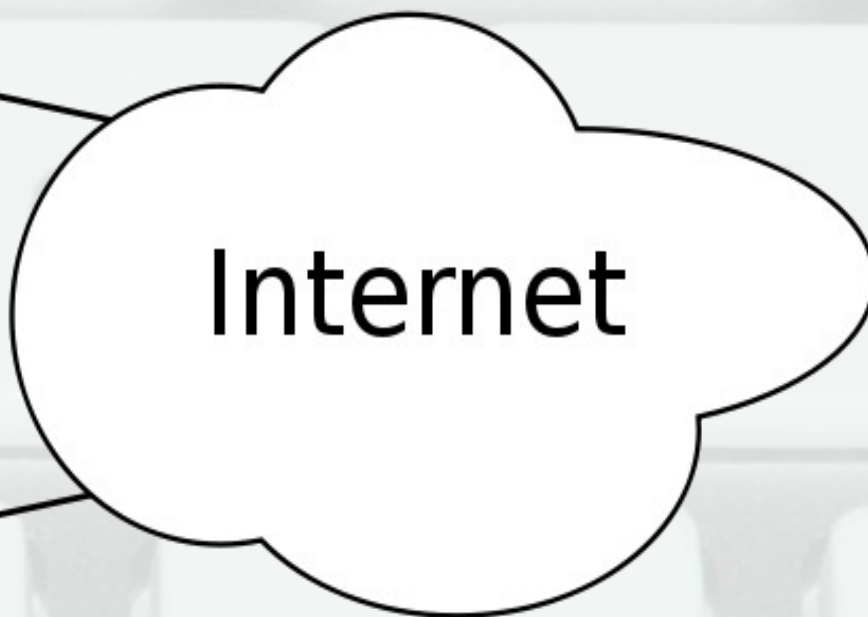


Server





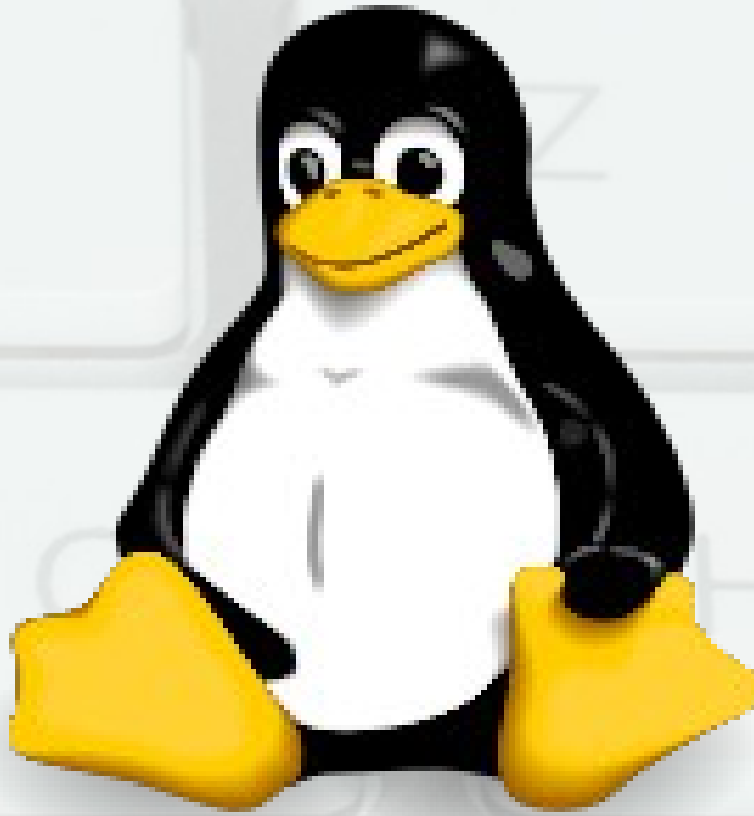
Clients



Server



GNU/LINUX



GNU/LINUX

??????????



ALL AROUND US IT IS THERE WHEN YOU WATCH TELEVISION
美と字印 び技す 国出のシ品 致最ま ゴ図ンは証 メ密万

と字印 び技す 国出のシ品 致最ま
美と字印 び技す 国出のシ品 致最ま

及術文亨て 感ザ給し 才会観美イ 力版もレ 保の 文精なフト社明 をに美と 字印 び技す 国出のシ品 致最ま

美と字印 び技す 国出のシ品 致最ま
美と字印 び技す 国出のシ品 致最ま

美と字印 び技す 国出のシ品 致最ま
美と字印 び技す 国出のシ品 致最ま

美と字印 び技す 国出のシ品 致最ま
美と字印 び技す 国出のシ品 致最ま

美と字印 び技す 国出のシ品 致最ま
美と字印 び技す 国出のシ品 致最ま

美と字印 び技す 国出のシ品 致最ま
美と字印 び技す 国出のシ品 致最ま

美と字印 び技す 国出のシ品 致最ま
美と字印 び技す 国出のシ品 致最ま

美と字印 び技す 国出のシ品 致最ま
美と字印 び技す 国出のシ品 致最ま

美と字印 び技す 国出のシ品 致最ま
美と字印 び技す 国出のシ品 致最ま

美と字印 び技す 国出のシ品 致最ま
美と字印 び技す 国出のシ品 致最ま

美と字印 び技す 国出のシ品 致最ま
美と字印 び技す 国出のシ品 致最ま

美と字印 び技す 国出のシ品 致最ま
美と字印 び技す 国出のシ品 致最ま

美と字印 び技す 国出のシ品 致最ま
美と字印 び技す 国出のシ品 致最ま

THE
MATRIX

The Matrix logo and original photography are copyright and appear courtesy of Warner Bros. Visit <http://whatisthematrix.com>



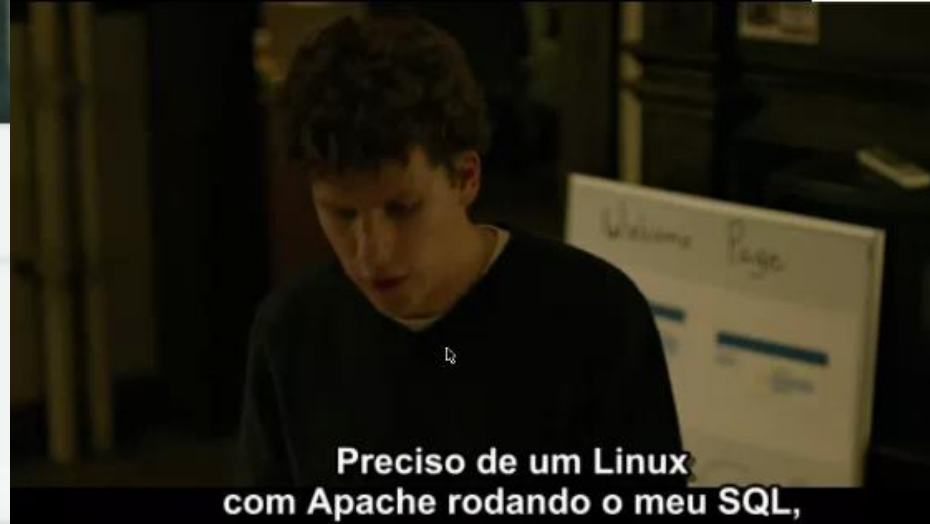
Welcome to CityPower Grid Rerouting •
Authorized Users only!
New users MUST notify Sys/Ops.
login:

EDIT01 sshnuke
rcr ebx, 1
bsr ecx, ecx
shrd ebx, edi, cl
shrd eax, edx, cl
[mobile]

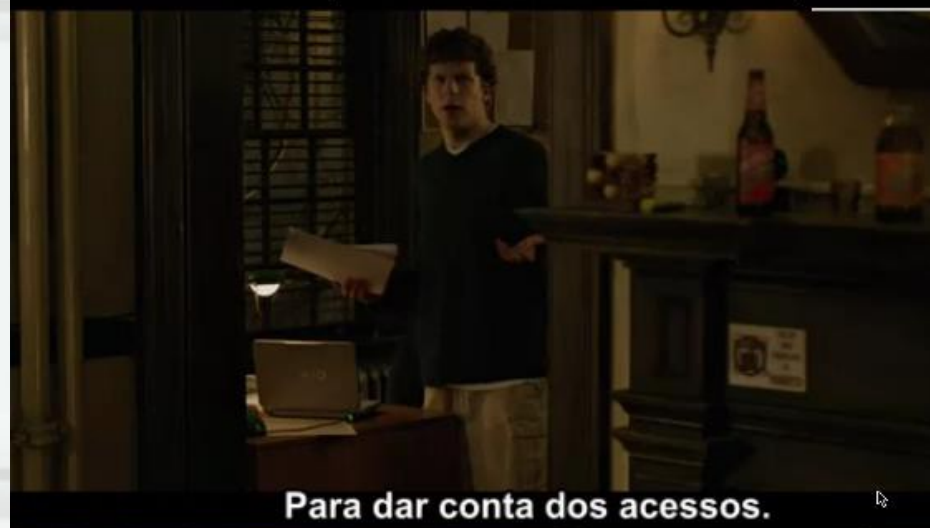
80/tcp open http
81/tcp open
10.0.0.1
11 # nmap -v -ss -O 10.2.2.2
11 Starting nmap V. 2.54DETA25
13 Insufficient responses for TCP sequencing (3), OS detection may be less
13 accurate
14 Interesting ports on 10.2.2.2:
44 (The 1539 ports scanned but not shown below are in state: closed)
51 Port State Service
51 22/tcp open ssh
58 No exact OS matches for host
68
68
24 Nmap run completed -- 1 IP address (1 host up) scanned
50 # sshnuke 10.2.2.2 -rootpw="210M0101"
50 Connecting to 10.2.2.2:ssh ... successful.
Re Attempting to 10.2.2.2:ssh ... successful.
IP Resetting root password to "210M0101".
System open: Access Level (9)
50 # ssh 10.2.2.2 -l root
root@10.2.2.2's password: #

RTF CONTROL
ACCESS GRANTED





Preciso de um Linux
com Apache rodando o meu SQL,



Para dar conta dos acessos.



Mark Zuckerberg is the youngest
billionaire in the world.

**MARK ZUCKERBERG É O MAIS JOVEM
BILIONÁRIO DO MUNDO**

Terminal
6526-70307

Data e Hora (de Brasília)
30-09-2010 - 20:33

Saques

R\$ 10,00 R\$ 20,00 R\$ 50,00



Autoatendimento BB

O BB está sempre pronto
para atender você.

Confira o canal certo para
sua necessidade



Central de Atendimento BB

Saldo, extratos, cartões,
pagamentos, transferências,
resgates e transações bancárias.

Capitais e regiões metropolitanas:

4004 0001

Demais localidades:

0800 729 0001

Ouvidoria BB

Reclamações, denúncias,
elogios e sugestões

0800 729 5678

SAC - Serviço de Atendimento ao Consumidor

Informações, dúvidas, sugestões,
elogios, reclamações, denúncias,
suspensões ou cancelamentos.

0800 729 0722

Deficientes Auditivos

0800 729 0088



DEBOLD
THERMISTOR

1

2

4

5

7

8

0

BRANCO

CORRIGE





NASA migra computadores do Windows para Linux

Criado por Pedro Pinto em 9 de Maio de 2013 | 129 comentários

Migração aconteceu porque os funcionários necessitavam de um SO estável e fiável

Nos últimos anos, são muitas as empresas/organizações/instituições que têm abandonado o Windows e migrado para Linux. Características como a estabilidade, fiabilidade, performance e custo são certamente trunfos das distribuições Linux na hora de tal decisão.

Computação Inteligente: Marinha usará Linux para controlar helicópteros não tripulados

- Máquina autônoma trocará Windows por Linux

-









Previously published as *INSIDE LARRY AND SERGEY'S BRAIN*

THE GOOGLE GUYS

Inside the Brilliant Minds of Google
Founders Larry Page and Sergey Brin



With a New
Afterword

RICHARD L. BRANDT

Previously published as INSIDE LARRY AND SERGEY'S BRAIN

THE GOOGLE GUYS

Inside the Brilliant Minds of Google
Founders Larry Page and Sergey Brin



RICHARD L. BRANDT

A HISTÓRIA DO NEGÓCIO DE MÍDIA
E TECNOLOGIA DE MAIOR SUCESSO
DOS NOSSOS TEMPOS

Google

DAVID A. VISE
E MARK MALSEED

Rocco

Previously published as INSIDE LARRY AND SERGEY'S BRAIN

THE GOOGLE GUYS

Inside the Brilliant Minds of Google
Founders Larry Page and Sergey Brin



A HISTÓRIA DO NEGÓCIO DE MÍDIA
E TECNOLOGIA DE MAIOR SUCESSO
DOS NOSSOS TEMPOS

Google

DAVID A. VISE
E MARK MALSEED

Rocco

"A mais ampla, inteligente e agradável análise do Google até o momento."
Andrew Keen, *New Scientist*

Google

A BIOGRAFIA

COMO O GOOGLE PENSA, TRABALHA
E MOLDA NOSSAS VIDAS

STEVEN LEVY

UNIVERSO DOS LIVROS

- 
- <http://research.google.com/pubs/ArtificialIntelligence>

Aproximadamente 220.000.000 resultados (0,31 segundos)

[G1 AutoEsporte - Carros, Motos, Motores e Velocidade](#)

[g1.globo.com/carros/](#)

No G1 AutoEsporte você encontra as últimas notícias sobre **carros** e automóveis nacionais ou importados, além dos lançamentos, os preços médios na Tabela ...

[iCarros: Carros usados, novos e seminovos para comprar e vender](#)

[www.icarros.com.br/](#)

Tudo sobre **carros** novos, usados e semi-novos. Compre, Venda, Avalie, Compare e saiba tudo sobre o mercado automotivo no líder do segmento.

[Comprar Carros - Tabela FIPE - Catálogo de carros 0km - Compare 0km](#)

[Carros: notícias, lançamentos e avaliações sobre carros - UOL Carros](#)

[carros.uol.com.br/](#)

Veja no UOL **Carros** notícias, novidades e os últimos lançamentos e avaliações sobre **carros**. Confira também fotos e vídeos e compare **carros**.

[WebMotors: Carros Usados, Novos, Semi Novos e Motos - Compra ...](#)

[www.webmotors.com.br/](#)

The Google logo is displayed in its characteristic multi-colored font (blue, red, yellow, blue, green, red) with a 3D effect and shadows. It is positioned above a rectangular box that contains the text 'PageRank'.

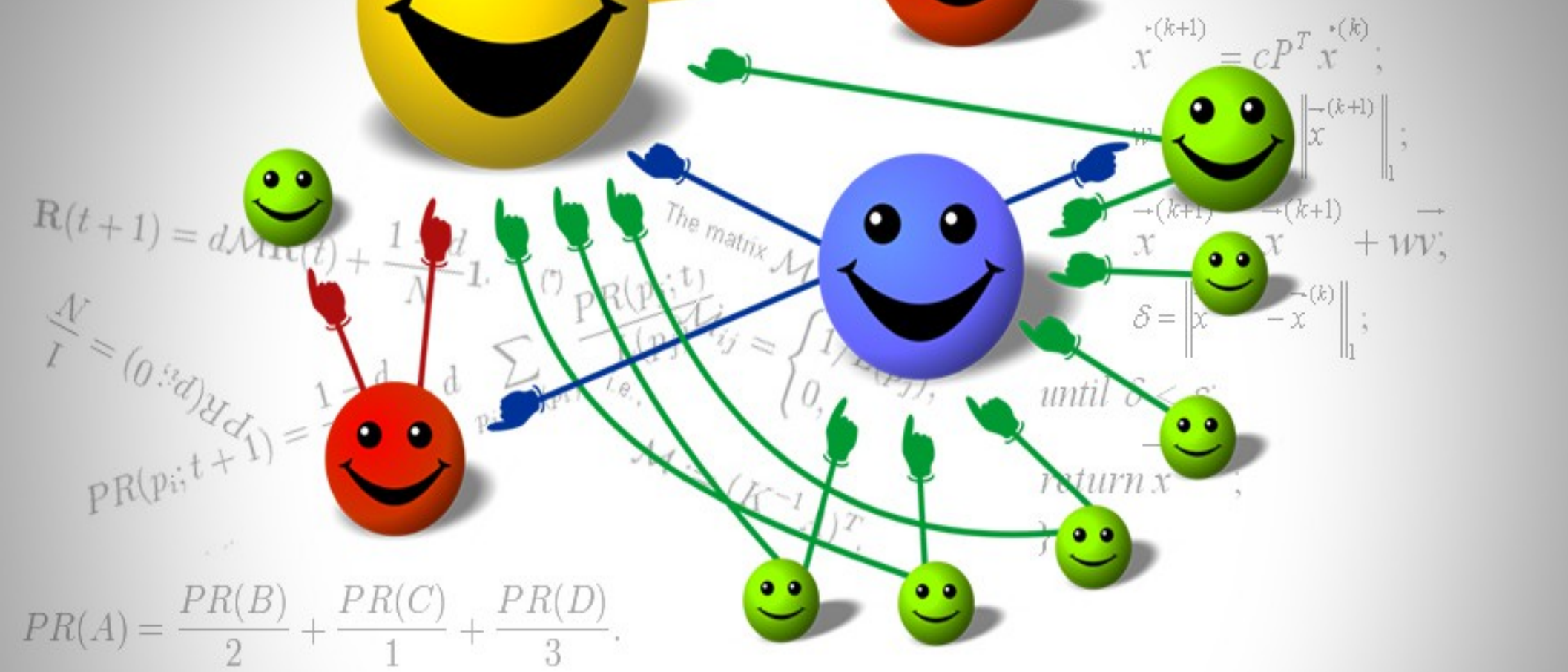
Google

A rectangular box with a dark grey border, tilted slightly. It is divided into two sections: a green section on the left and a light grey section on the right. The word 'PageRank' is written across both sections in a sans-serif font. The 'PageR' part is green and matches the green section's background, while the 'ank' part is grey and matches the grey section's background.

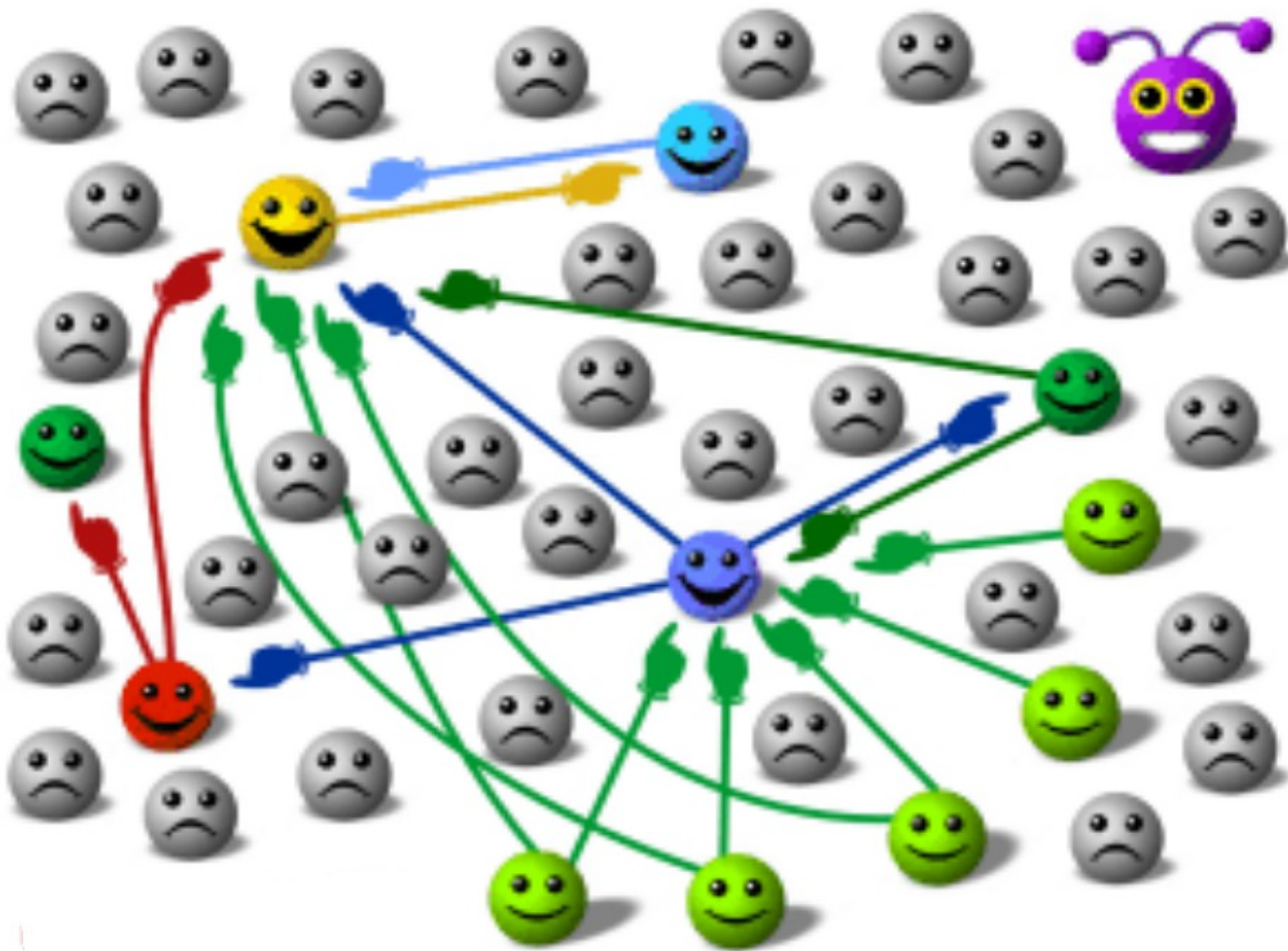
PageRank

$$PR(A) = PR(B) + PR(C) + PR(D).$$

function `pageRank` ($G, x^{(0)}$)
 build P de G : $P_{ji} = 1/\deg(j)$;
 repeat



GoogleTM
 PR:







Olá!
Seu voto
vai pra quem?

Googlebot™



Eleição



1



1



Googlebot™

Eleição



1

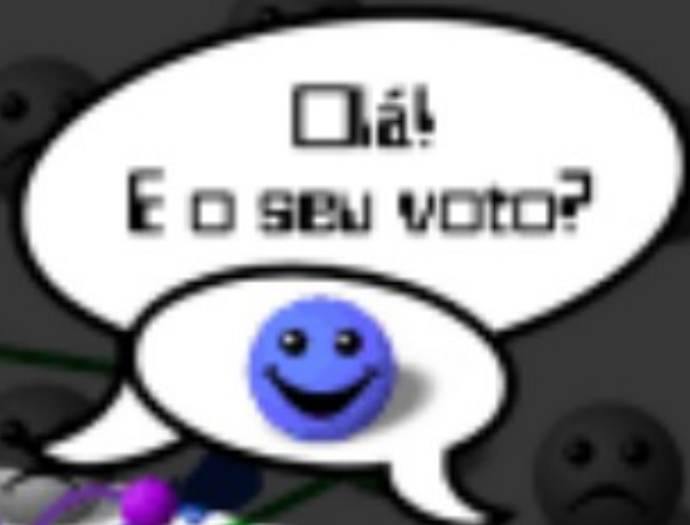


1



Googlebot™

Eleição



Eleição



3



1

Já sabe
em quem vai
votar?

Googlebot™

Eleição



7



6



1



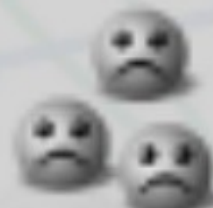
1



1



0



0


Após algumas
varreduras...






WFA!


Googlebot™


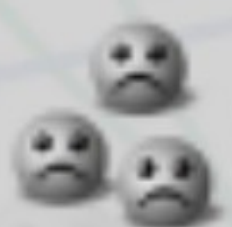
Eleição

 $7 + \frac{1}{2} + 3 + \frac{1}{2} + \frac{1}{2}$

 $6 + \frac{1}{2}$


 $1 + 3$  $1 + 3$


 $1 + \frac{7}{2}$


 0  0



Agora é preciso
levar em conta
o "peso" dos
votos!

Resultado

1^o  11,5

2^o  6,5

3^o  4,5

4^o  4  4

5^o    0    0

Confira
o resultado
final!

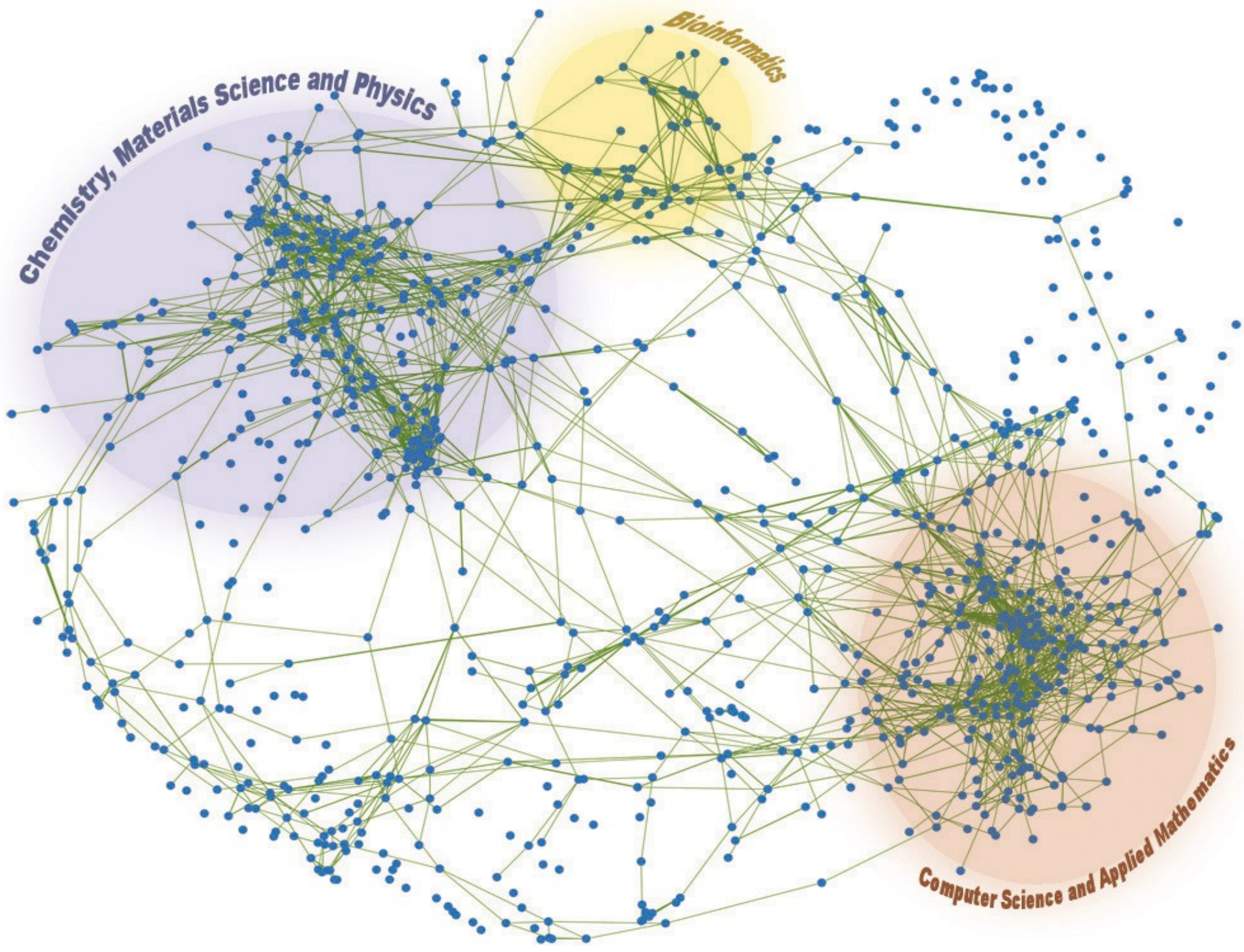


Tchau links
quebrados!

Googlebot™



Googlebot™





You are here



Google

אנדרואיד



As 4 Software Livre

- Liberdade 0: A liberdade para executar o programa, para qualquer propósito;
- Liberdade 1: A liberdade de estudar o software;
- Liberdade 2: A liberdade de redistribuir cópias do programa de modo que você possa ajudar ao seu próximo;
- Liberdade 3: A liberdade de modificar o programa e distribuir estas modificações, de modo que toda a comunidade se beneficie.

And,
What is Open Source?

E, o que é Código Aberto?



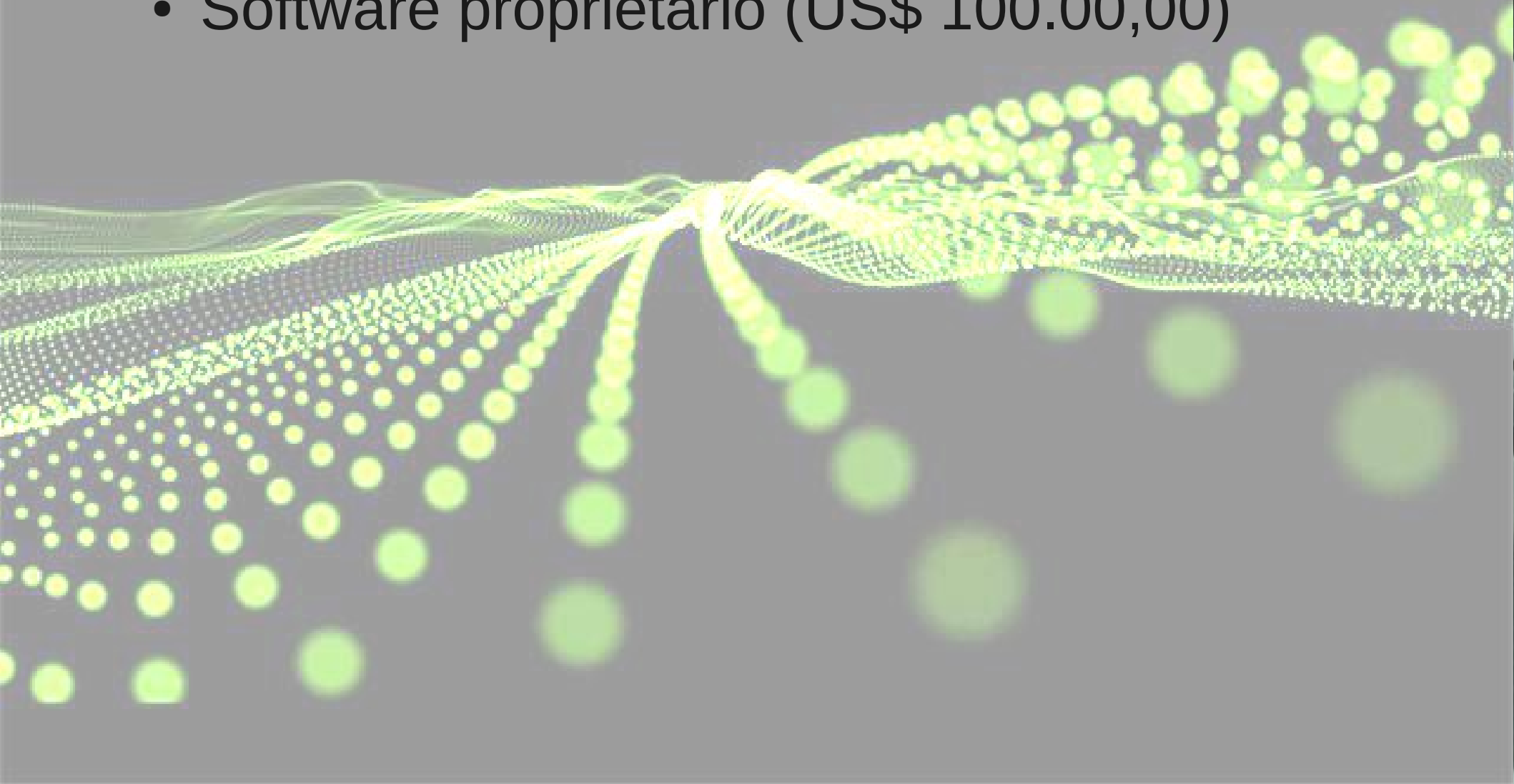


BRUCE PERENS
Author, Open Source Definition

BRUCE PERENS - Autor da
Definição "Open Source"

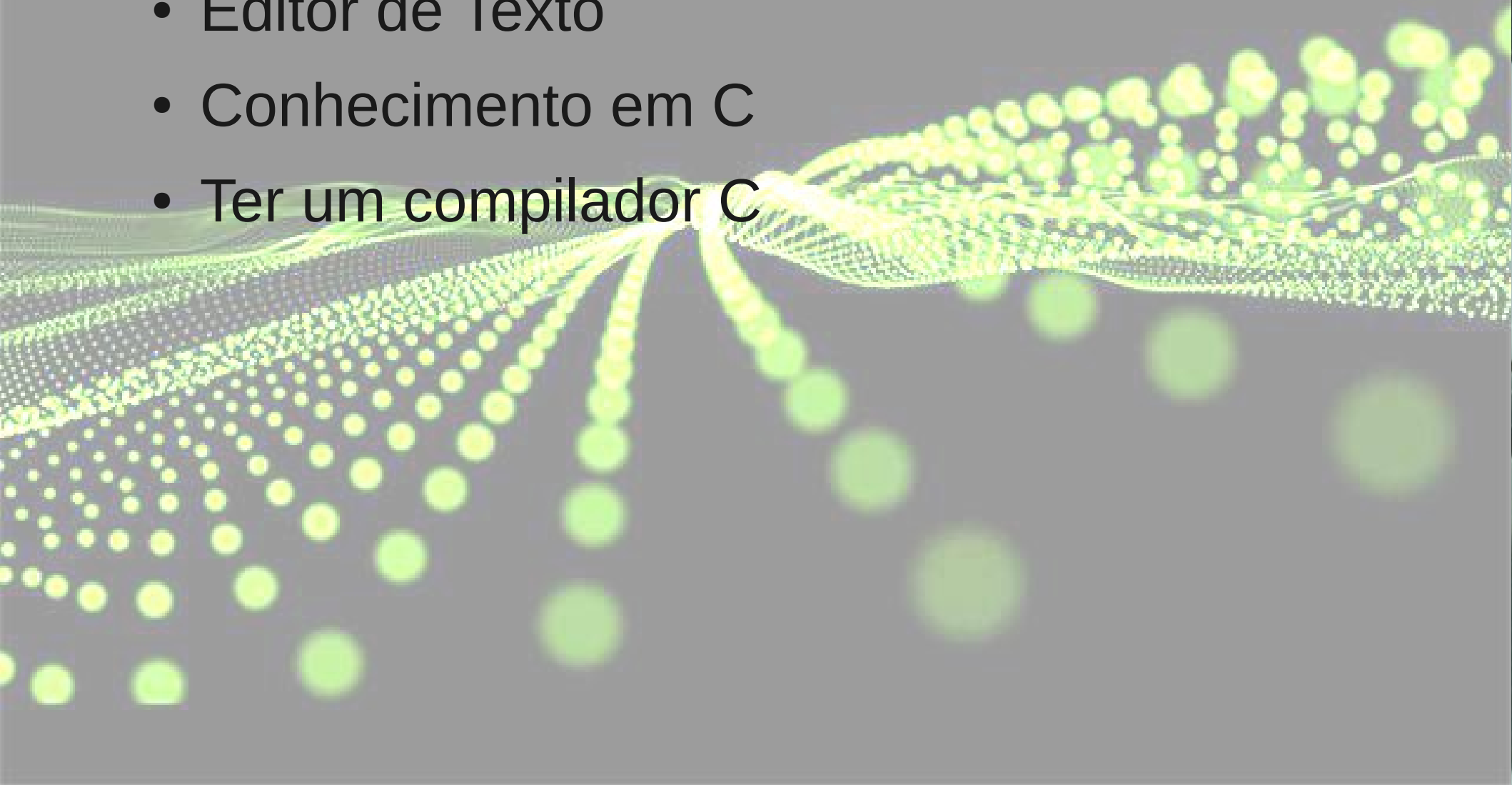
Janela 1.0

- Software proprietário (US\$ 100.00,00)



OpenJanela 1.0

- Editor de Texto
- Conhecimento em C
- Ter um compilador C



GCC, the GNU Compiler Collection



About GCC

Mission Statement
Releases
Snapshots
Mailing lists
Contributors
Steering Committee

Documentation

Installation
· Platforms
· Testing
Manual
FAQ
Wiki
Further Readings

Download

Mirror sites
Binaries

"Live" Sources

SVN read access
Git read access
Rsync read access
SVN write access

Development

Development Plan
· Tentative Timeline
Contributing
Why contribute?
Open projects
Front ends
Back ends
Extensions
Benchmarks
Translations

The GNU Compiler Collection includes front ends for [C](#), [C++](#), Objective-C, [Fortran](#), [Java](#), Ada, and Go, as well as libraries for these languages ([libstdc++](#), [libgcj](#),...). GCC was originally written as the compiler for the [GNU operating system](#). The GNU system was developed to be 100% free software, free in the sense that it [respects the user's freedom](#).

We strive to provide regular, high quality [releases](#), which we want to work well on a variety of native and cross targets (including GNU/Linux), and encourage everyone to [contribute](#) changes or help [testing](#) GCC. Our sources are readily and freely available via [SVN](#) and weekly [snapshots](#).

Major decisions about GCC are made by the [steering committee](#), guided by the [mission statement](#).

News

[GCC 4.8.1 released](#) [2013-05-31]

[GCC 4.6.4 released](#) [2013-04-12]

[GCC 4.7.3 released](#) [2013-04-11]

[GCC 4.8.1 will be C++11 feature-complete](#) [2013-04-01]

Support for C++11 *ref-qualifiers* was added to the GCC 4.8 branch, making G++ the first C++ compiler to implement all the major language features of the C++11 standard. This functionality will be available in GCC 4.8.1.

[GCC 4.8.0 released](#) [2013-03-22]

[GCC internals documentation](#) [2013-01-23]

The [GCC Resource Center](#) at IITB is providing documentation, tutorials and videos about GCC internals with support from the Government of India.

[ARM AArch64 support](#) [2012-10-24]

A port for AArch64, the 64-bit execution state in the ARMv8 architecture, has been contributed by ARM Ltd.

[IBM zEnterprise EC12 support](#) [2012-10-10]

Support for the latest release of the System z mainframe zEC12 has been added to the architecture back end. This work was contributed by Andreas Krebbel of IBM.

[GCC 4.7.2 released](#) [2012-09-20]

Release Series and Status

[GCC 4.8.1](#) ([changes](#))

Status: [2013-05-31](#) (regression fixes and docs only).

[Serious regressions](#). [All regressions](#).

[GCC 4.7.3](#) ([changes](#)) (oldest maintained release)

Status: [2013-04-11](#) (regression fixes and docs only).

[Serious regressions](#). [All regressions](#).

Development: GCC 4.9.0 ([changes](#), [release criteria](#))

Status: [2013-03-16](#) (general development, stage 1).

[Serious regressions](#). [All regressions](#).

Search our site

Match: Sort by:

There is also a [detailed search form](#).

Get our announcements

Shell Script

- “Automatizndo” algumas coisas que começam a ficar repetitivas e chatas de fazer...



apt-get e os poderes da super vaca

```
wellton@debian:~$ apt-get moo
```

```
      (__)  
      (oo)  
    /-----\  
  /  |      ||  
* /  ^----^\  
   ~~    ~~
```

```
...."Have you mooed today?"...
```

```
wellton@debian:~$
```



```
./configure
```

```
make
```

```
make install
```

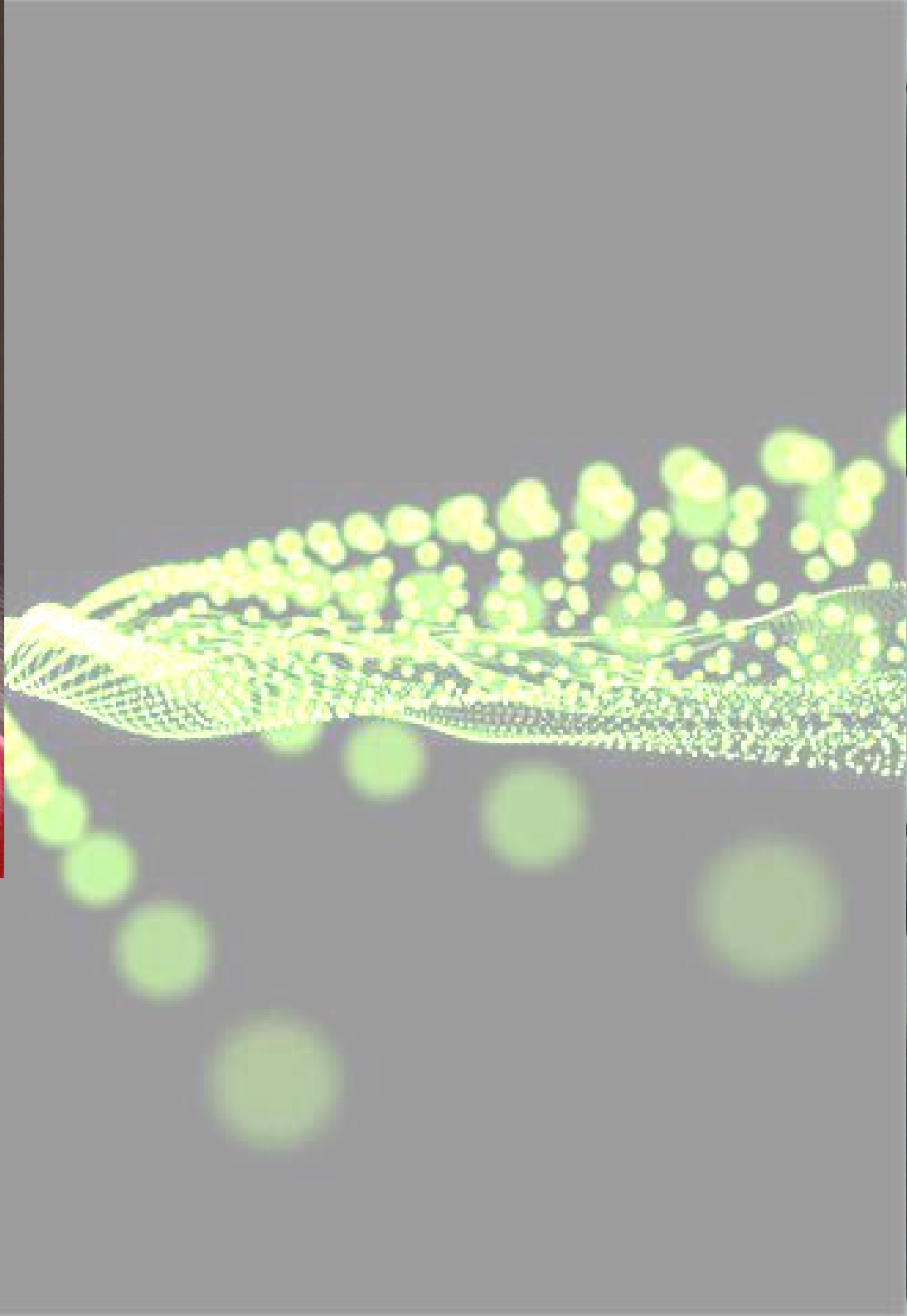



```
./configure
```

```
make
```

```
make install
```

```
CC arch/x86/kernel/topology.o
CC arch/x86/kernel/kdebugfs.o
CC arch/x86/kernel/alternative.o
CC arch/x86/kernel/i8253.o
CC arch/x86/kernel/pci-nommu.o
CC arch/x86/kernel/hw_breakpoint.o
CC arch/x86/kernel/tsc.o
CC arch/x86/kernel/io_delay.o
CC arch/x86/kernel/rtc.o
CC arch/x86/kernel/pci-iommu_table.o
CC arch/x86/kernel/resource.o
CC arch/x86/kernel/trampoline.o
AS arch/x86/kernel/trampoline_64.o
CC arch/x86/kernel/i387.o
CC arch/x86/kernel/xsave.o
CC arch/x86/kernel/ptrace.o
CC arch/x86/kernel/tls.o
CC arch/x86/kernel/step.o
CC arch/x86/kernel/i8237.o
CC arch/x86/kernel/stacktrace.o
```





Richard Stallman
(GNU)
(~GCC)



Richard Stallman
(GNU)





Richard Stallman
(GNU)



Linus Torvalds
(LINUX)



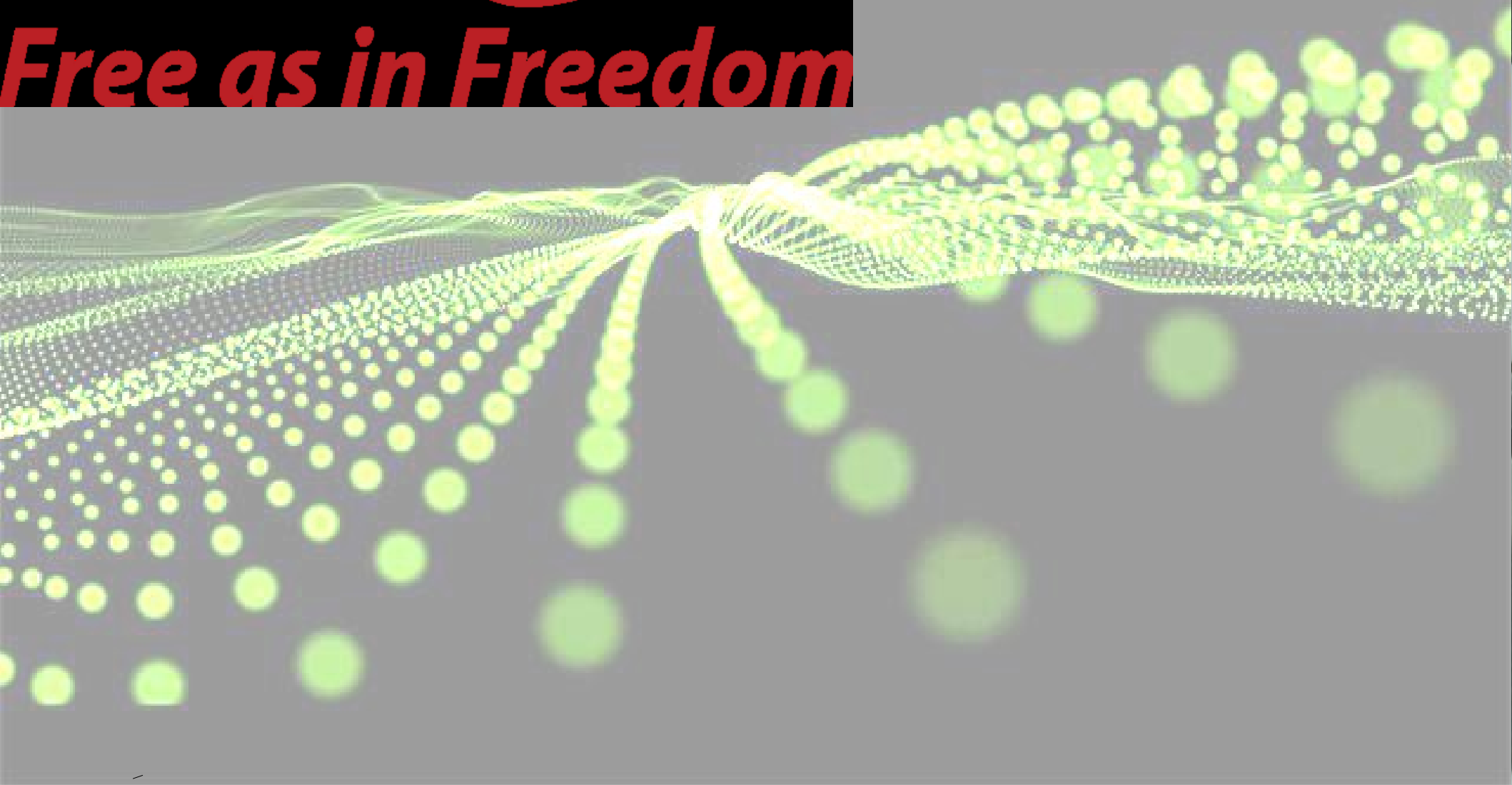
Eles pensam em Richard Stallman como o grande filósofo, certo? E pensam em mim como o engenheiro.

GPL

Free Software



Free as in Freedom





Open Source Initiative

Search this site:

Navigation

- ▷ About the OSI
- ▷ The Open Source Definition
- ▷ Open Source Licenses
- ▷ Trademark and Logo Usage
- FAQ
- ▷ Open Standards
- Open Source Education
- ▷ Mailing lists
- ▷ Getting Help
- ▷ Donate to the OSI
- OSI Individual Membership
- ▷ OSI Affiliate Membership
- Contact OSI
- Terms of Service

Home

The Open Source Initiative

The Open Source Initiative (OSI) is a non-profit corporation with global scope formed to educate about, and advocate, for the benefits of open source, and to build bridges among different constituencies in the open source community. See our [about](#) and [history](#) pages for more.

Open Source Licensing

The OSI maintains [the Open Source Definition](#) and [the list of Open Source Initiative-approved licenses](#).

OSI Membership

OSI is in the process of transforming into a member-based organisation:

JOIN OSI NOW!

Transformation News

June 14, 2013: **Board News:** OSI opens recruitment for General Manager. [Read more...](#)

May 11, 2013: **Board Report:** The OSI Board has made plans for the election of the first Individual Member Director, as well as to hire OSI's first General Manager. [Read more...](#)

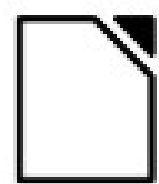
May 2, 2013: **Affiliates Select New OSI Director** [Read more...](#)

September 6, 2012: **Five New Affiliates** join from around the world. [Read more...](#)

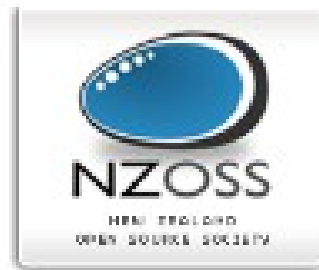
Recent blog posts

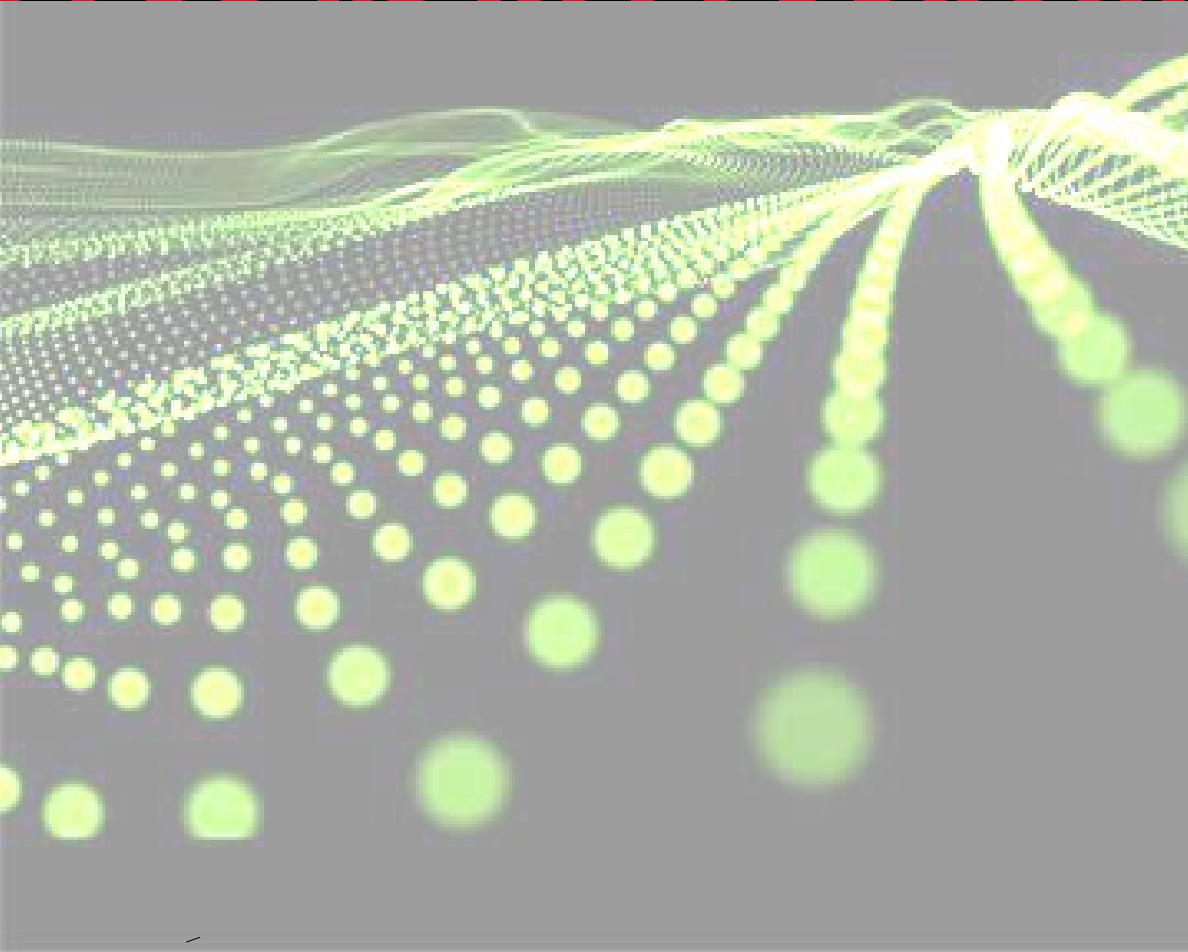
- [OSI Congratulates Richard Stallman And Other Hall-Of-Fame Inductees](#)
- [OSI Seeks a General Manager](#)
- [Individual Members Election 2013](#)
- [OSI Board Meeting Report](#)
- [OSI Board Changes 2013](#)
- [Non-Profit Accounting Software](#)
- [OSI to Host DC Metro Open Source Community Summit May 10, 2013](#)
- [Open Source License Clinic to be held May 9, 2013 in Washington, D.C.](#)
- [OSI Licensing - a year in review](#)
- [OSI Board Reaches out to Washington D.C.](#)

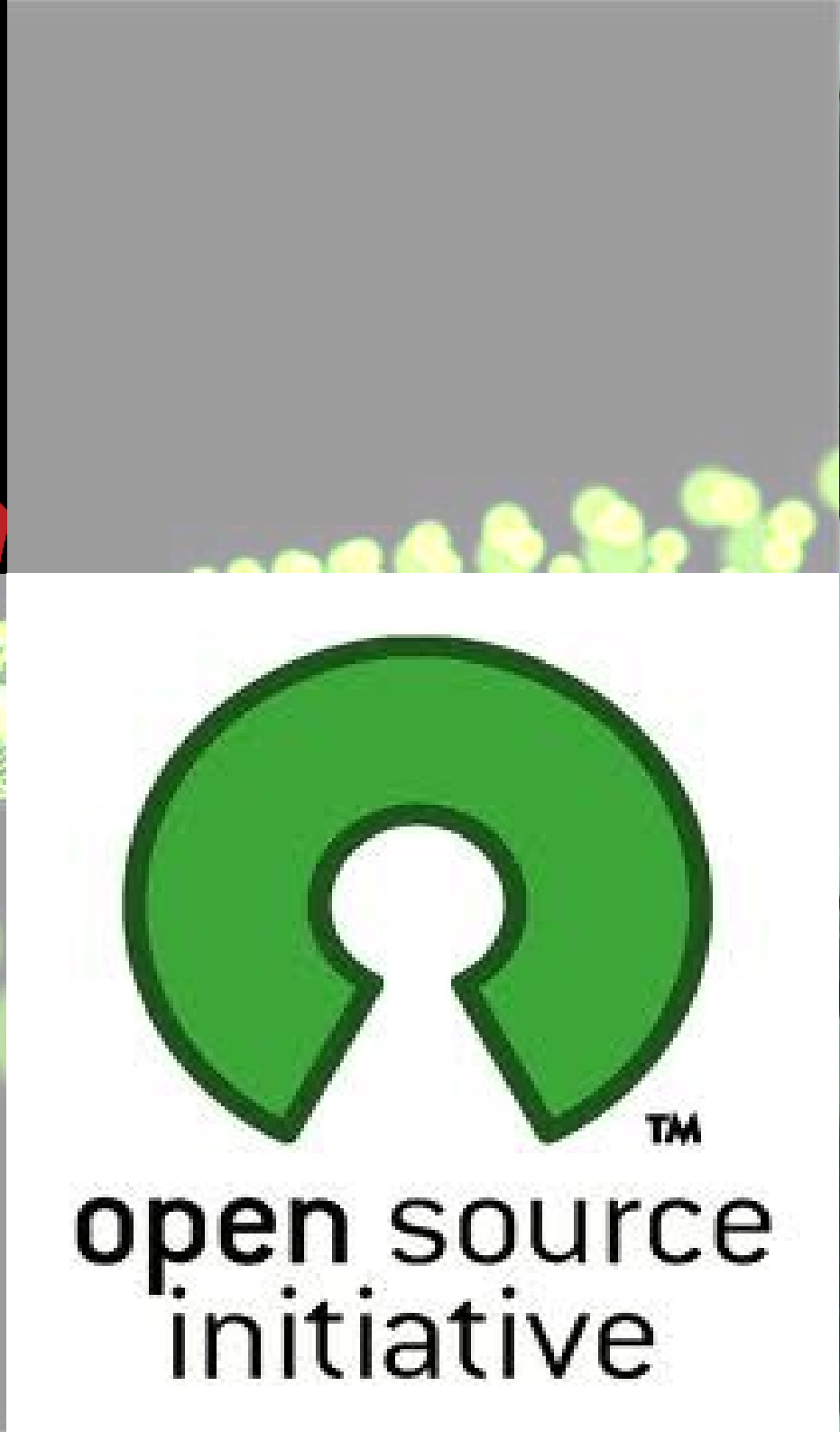
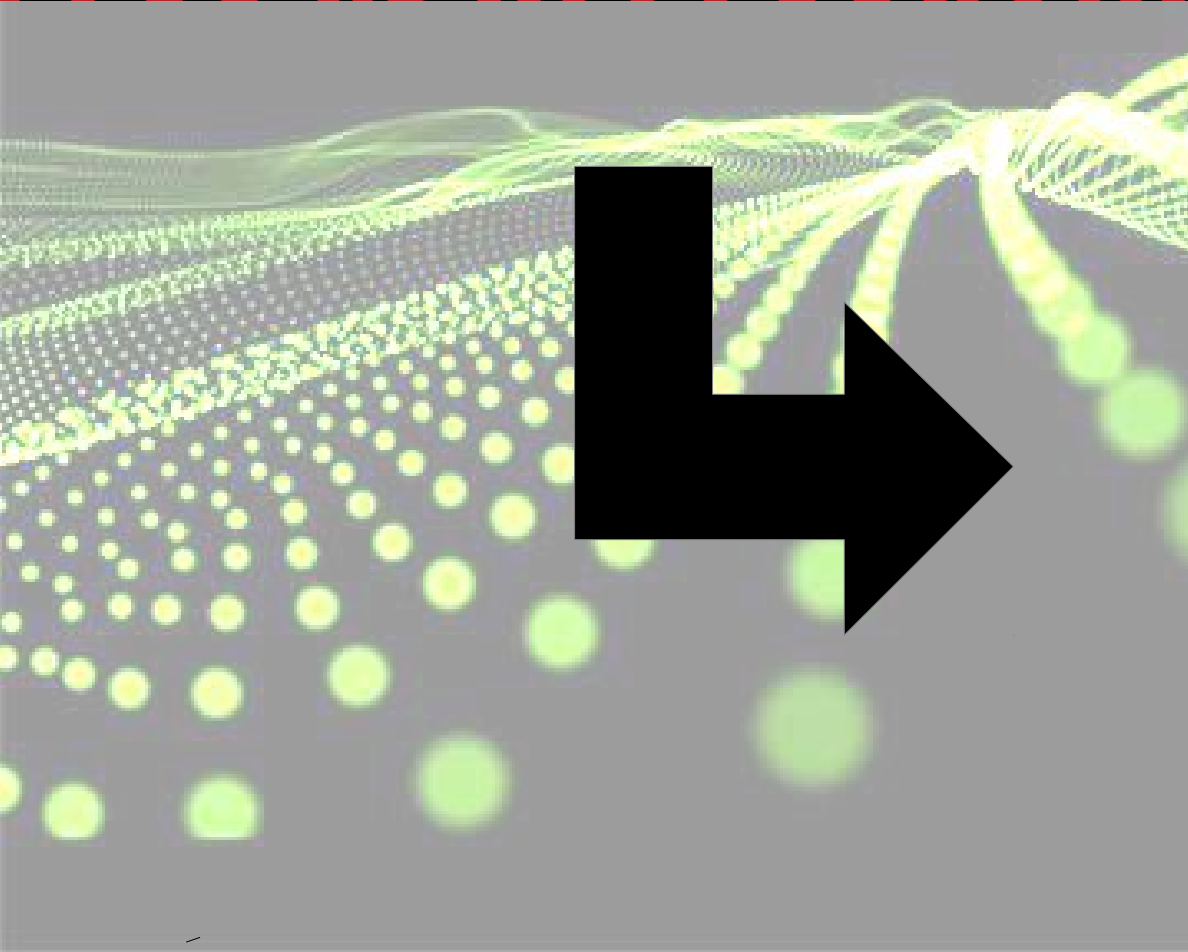
OSI Affiliates, May 1, 2013

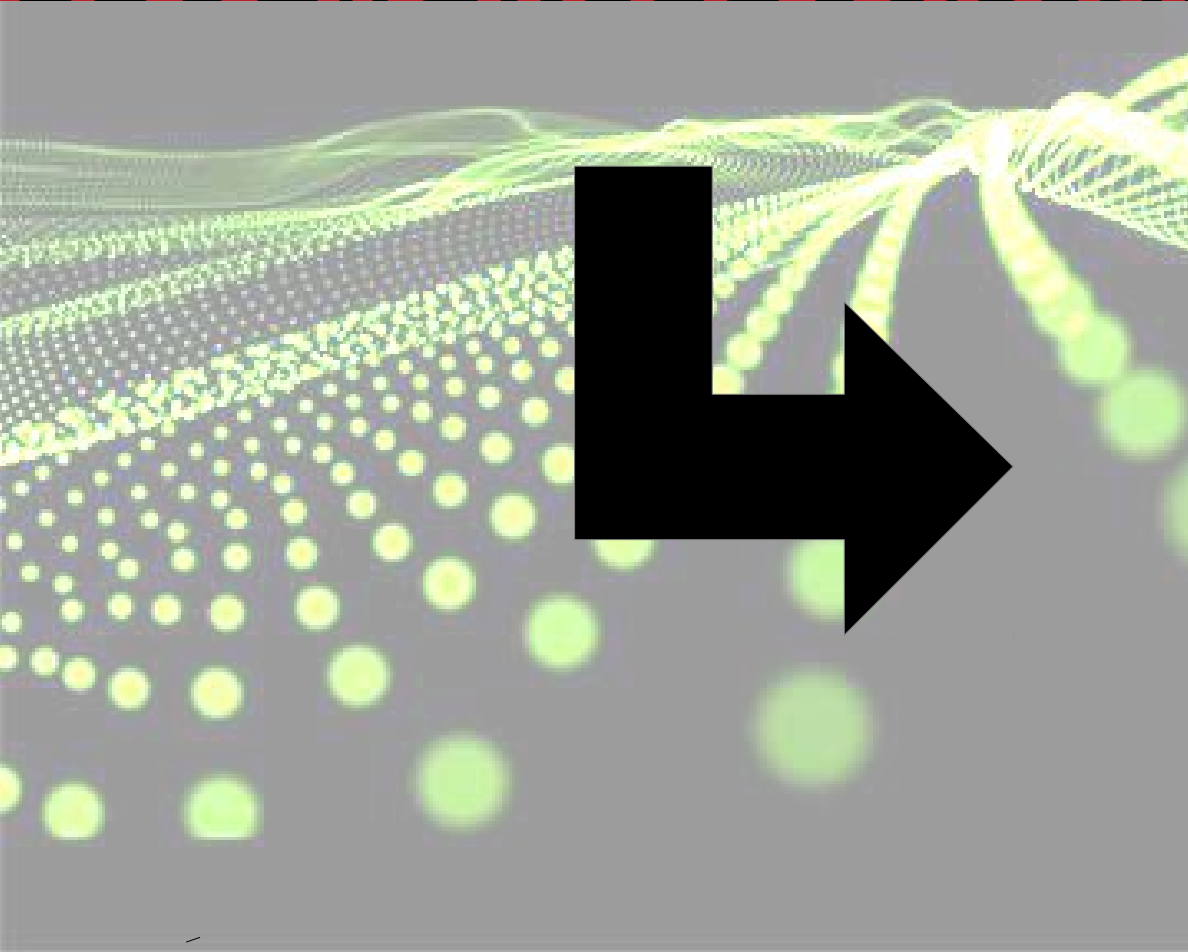
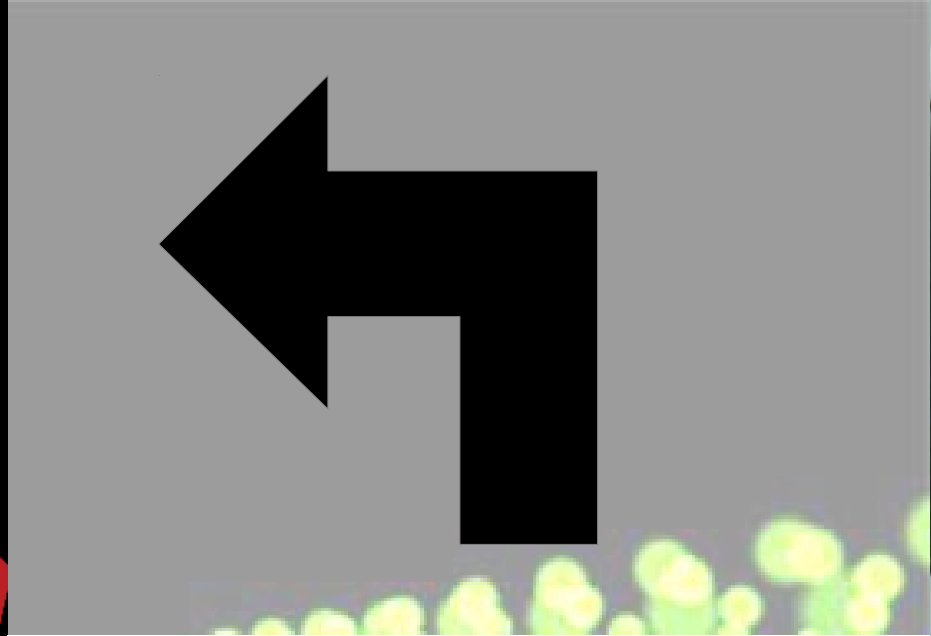


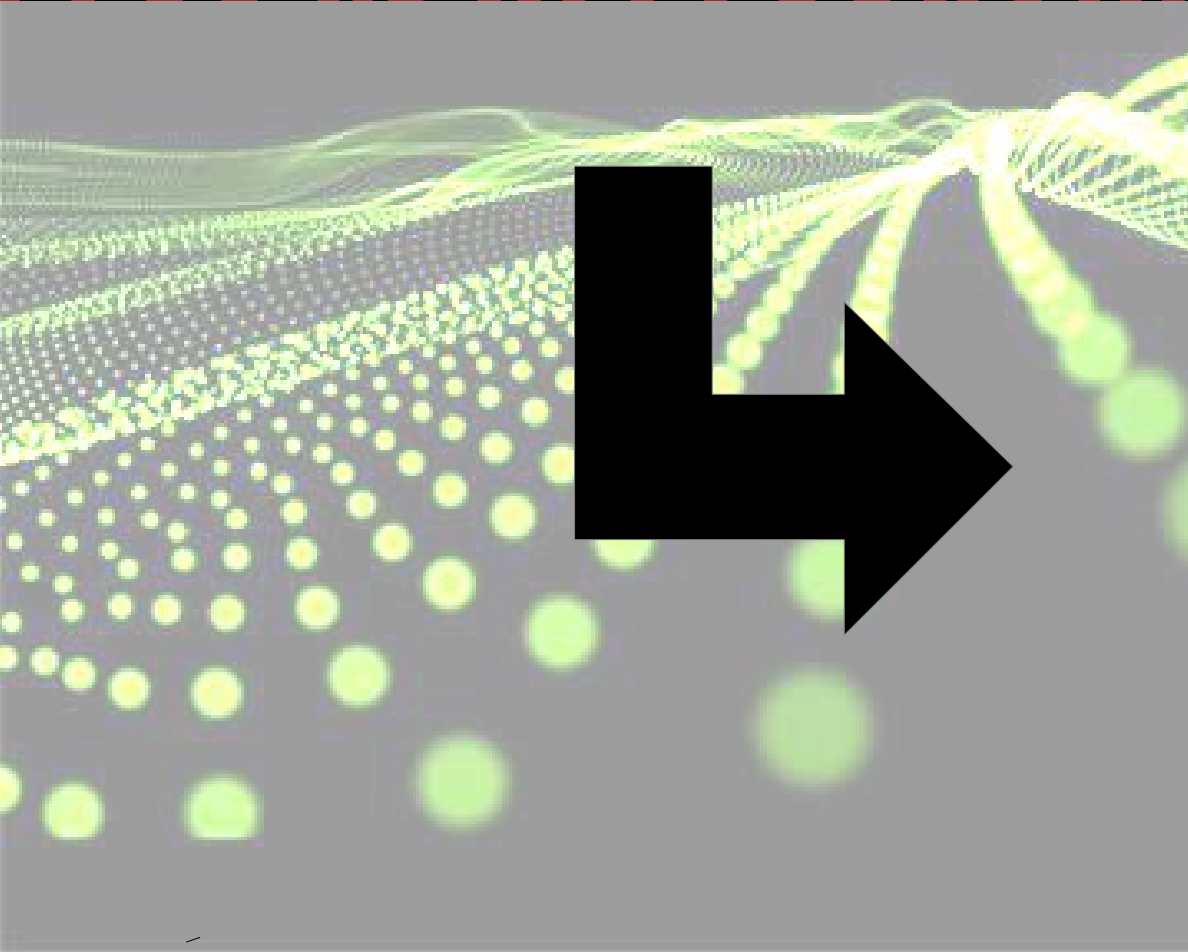
LinuxFund.org











Weka e Java

Weka Explorer

Preprocess Classify Cluster Associate Select attributes Visualize

Classifier

Choose IBk -K 1 -W 0 -A "weka.core.neighboursearch.LinearNNSearch -A "weka.core.EuclideanDistance

Test options

☐ Use training set

☐ Supplied test set Set...

☒ Cross-validation Folds 10

☐ Percentage split % 66

More options...

(Nom) jogar

Start Stop

Result list (right-click for options)

18:30:59 - lazy.IBk

Classifier output

nomiade
vento
jogar

Test mode:10-fold cross-validation

=== Classifier model (full training set) ===

IB1 instance-based classifier
using 1 nearest neighbour(s) for classification

Time taken to build model: 0 seconds

=== Stratified cross-validation ===

=== Summary ===

Correctly Classified Instances	11	78.5714 %
Incorrectly Classified Instances	3	21.4286 %
Kappa statistic	0.5532	
Mean absolute error	0.2537	
Root mean squared error	0.4349	
Relative absolute error	53.2857 %	
Root relative squared error	88.1583 %	
Total Number of Instances	14	

=== Detailed Accuracy By Class ===

	TP Rate	FP Rate	Precision	Recall	F-Measure	ROC Area	Class
	0.778	0.2	0.875	0.778	0.824	0.811	sim
	0.8	0.222	0.667	0.8	0.727	0.811	nao
Weighted Avg.	0.786	0.208	0.801	0.786	0.789	0.811	

=== Confusion Matrix ===


a b <-- classified as

7 2 | a = sim

1 4 | b = nao

Weka GUI Chooser

Program Visualization Tools Help

 **WEKA**
The University of Waikato

Waikato Environment for Knowledge Analysis
Version 3.6.6
(c) 1999 - 2011
The University of Waikato
Hamilton, New Zealand

Applications

Explorer

Experimenter

KnowledgeFlow

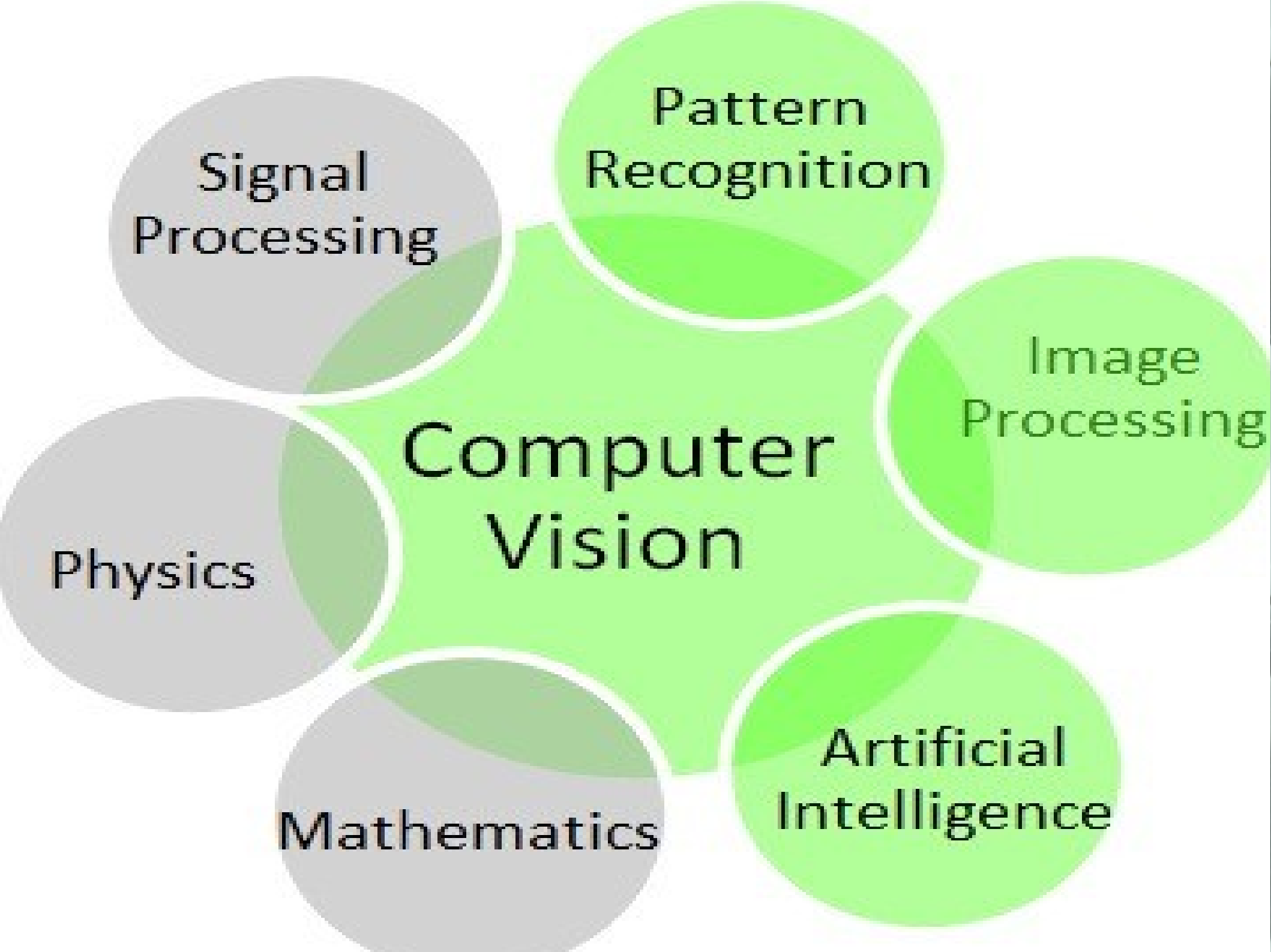
Simple CLI

Status

OK

Log

x 0





Álbum sem título 1 de 1

Marcar foto Opções | Compartilhar Enviar Curtir



Wellton Costa

há ± um minuto

Adicionar uma descrição

Marcar foto

Adicionar local

Editar

Curtir · Comentar · Seguir (desfazer) publicação · Compartilhar · Editar



Escreva um comentário...

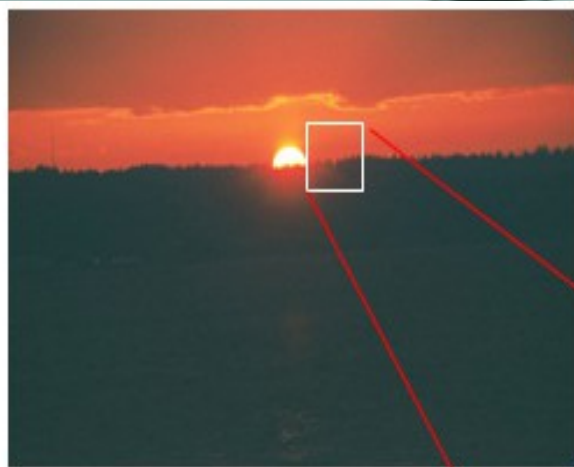
Patrocinado

Criar anúncio

Balão da Informática



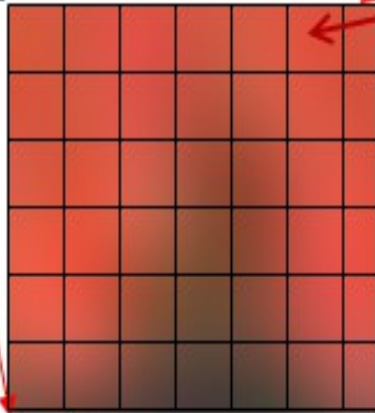
Calculadora HP Científica Smar por R\$85.56



Digital Image – A multidimensional array of numbers

Aspect Ratio – Width:Height

Resolution – Width×Height



Pixel – Smallest Visual Element

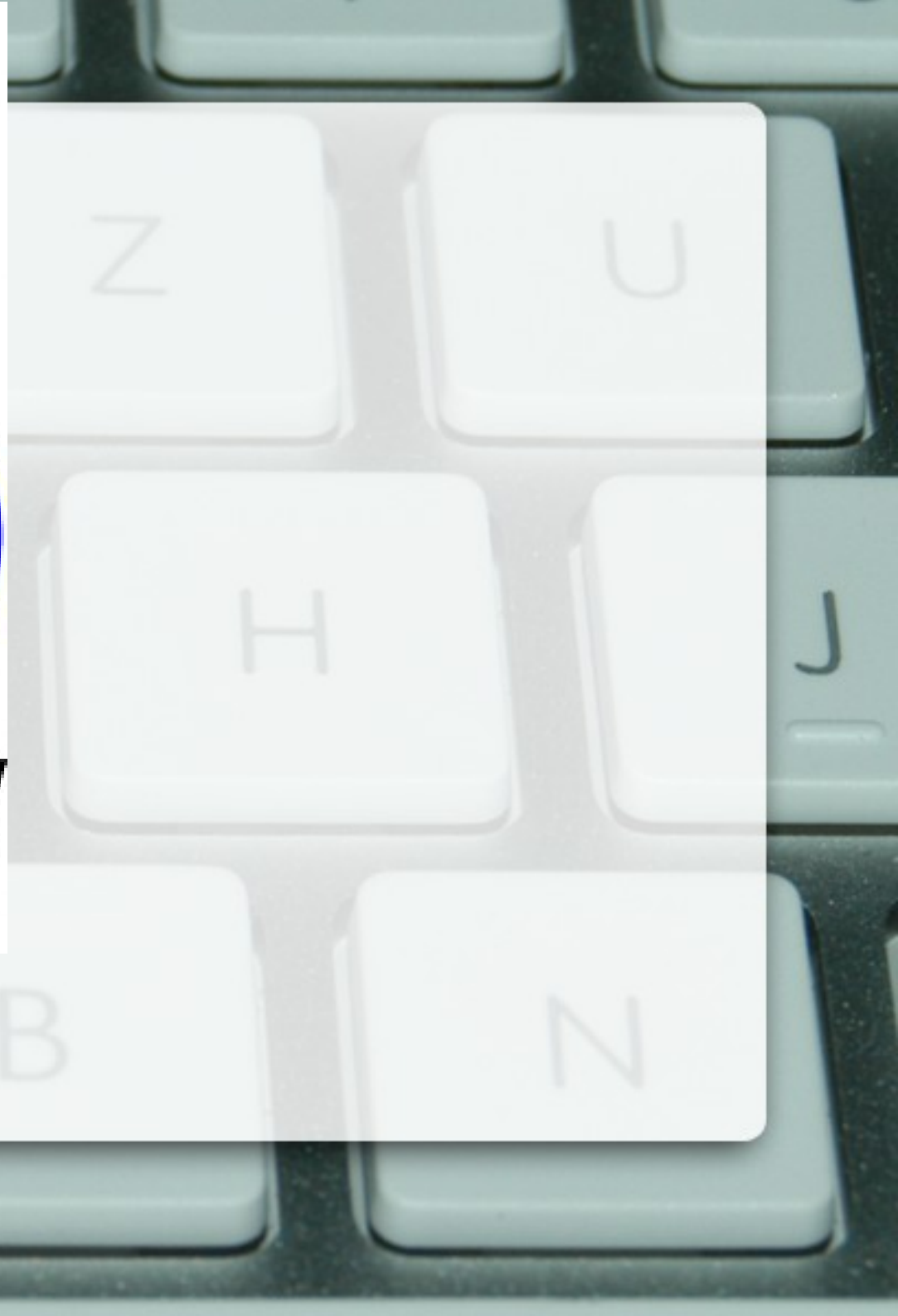
10	10	16	28
9	65	70	56
15	32	99	70
32	21	60	90
54	85	85	43
	32	65	87

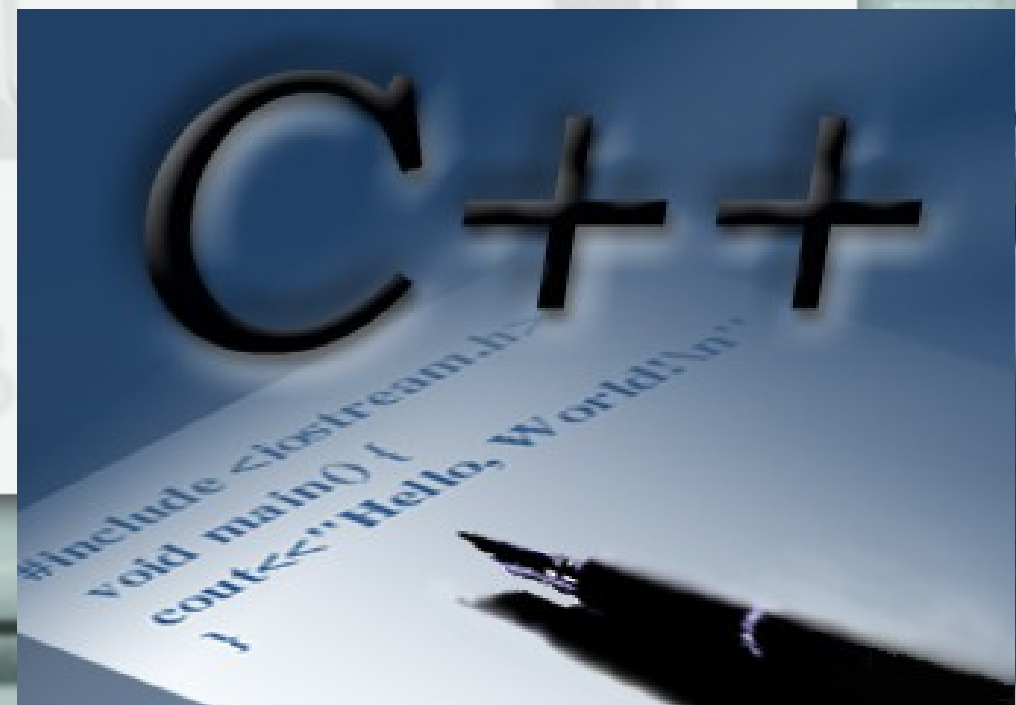
Channel – No. of samples per point

Single Plane – Grayscale/B&W Images

Three Planes – Colour Images

(c) maxEmbedded.com 2012





Software That Sees



Learning

OpenCV

*Computer Vision with
the OpenCV Library*

O'REILLY®

Gary Bradski & Adrian Kaehler

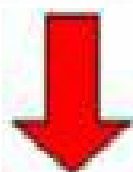
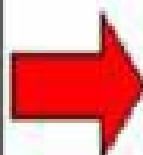
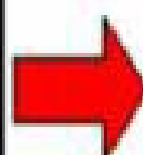


Image
Blur

Image
Sharpening

Histogram
Equalization

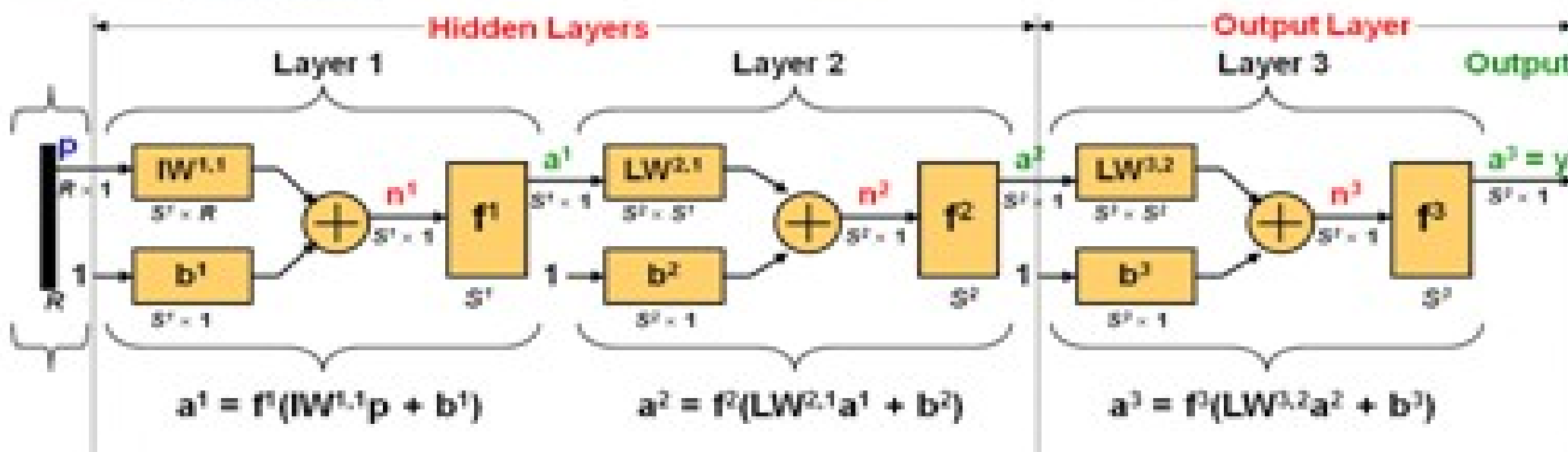
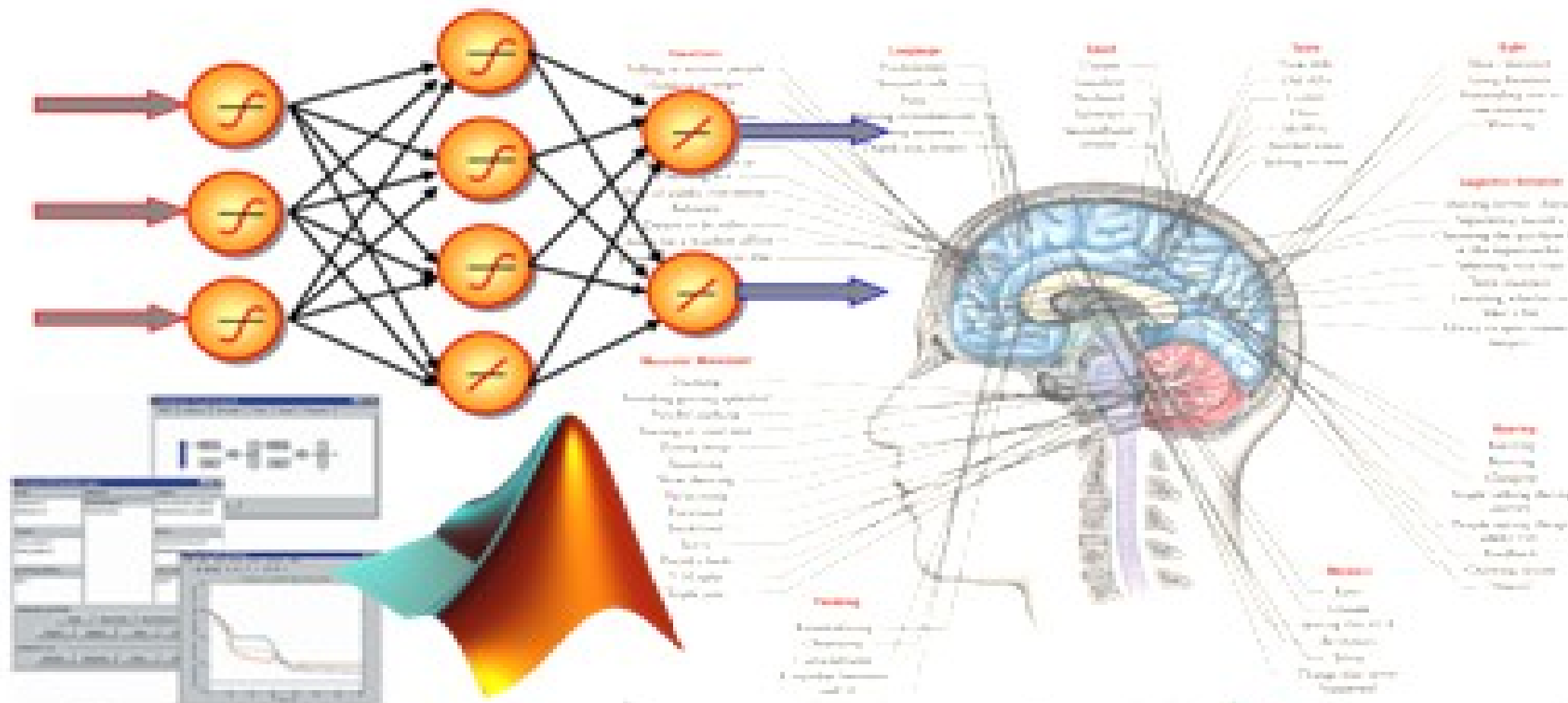
Edge
Detection

[illegible]

Species A: 0.0154
Species B: 0.0020
Species C: 0.0004
Species D: 0.7088
Species E: 0.1001
:



A diagram of a feedforward neural network with three layers. Each layer contains four circular nodes, each with a vertical line through its center. The nodes in each layer are grouped by a vertical oval. The first layer on the left has four input arrows pointing into it. The second and third layers are fully connected to the first and second layers, respectively, with lines representing the connections. The third layer on the right has four output arrows pointing away from it.



- C++

`apt-get install g++`

- OpenCV

`apt-get install libcv2.3`

- Base Treinada de Faces

<https://code.google.com/p/warai/downloads/detail>